

# Housing Instability Insights

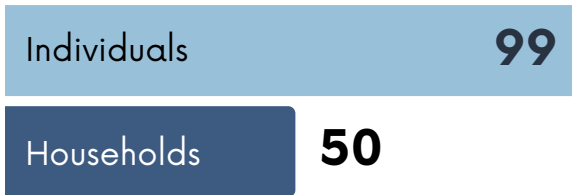
Skagit County - April 2026



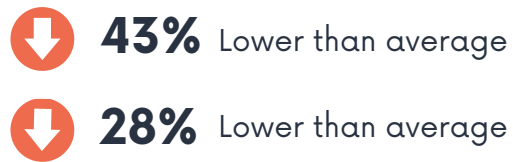
## What is Coordinated Entry?

Coordinated Entry is a system used in Skagit County and other communities to ensure that all people experiencing homelessness are quickly and fairly connected to limited housing resources based on their level of need.

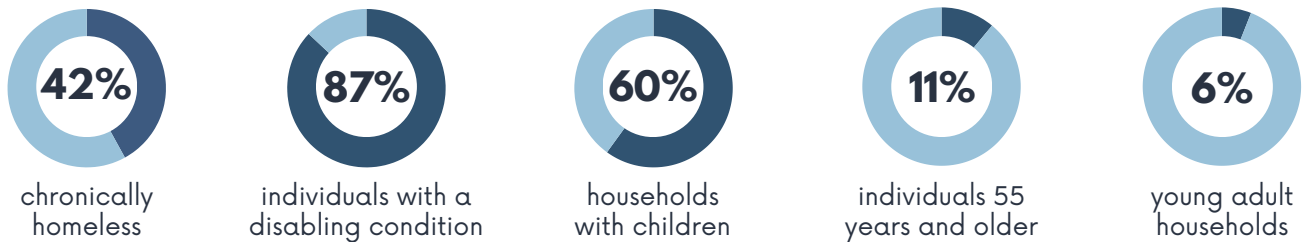
## How many people sought and qualified for housing support?



## How does this compare to other months in 2026?



## Who sought housing support?

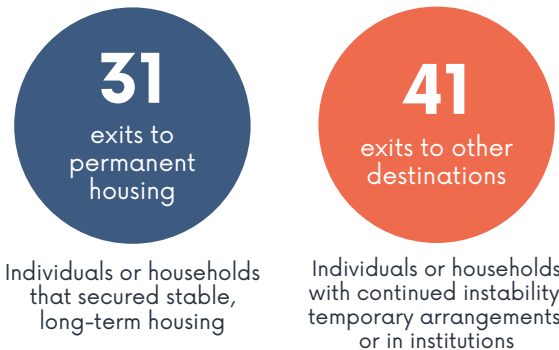


## Referrals and Enrollments

	Referrals	Enrolled
Emergency Shelter	123	52
Rapid Rehousing	45	7
Prevention & Rental Assistance	53	22
Permanent Supportive Housing	72	4

## Exit Destinations

When someone leaves housing or services part of the homeless response system, the next place they go is called an exit destination. Tracking this helps us understand how our response system is working.



Individuals or households that secured stable, long-term housing

Individuals or households with continued instability, temporary arrangements, or in institutions

## Need help? Call 360-VOA-HELP

Call **VOA Connect** to talk with a trained professional who can connect you to the local services you need - including food, housing, treatment, and more!

## Questions about this report?

Please contact Lindy Poole, Data Systems Analyst, at [lpool@voaww.org](mailto:lpool@voaww.org).